

Brad Foote: Your one-stop shop for gearboxes

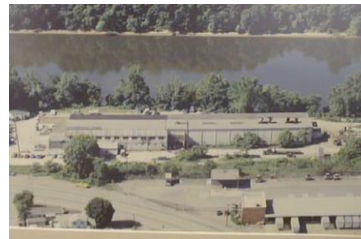
Brad Foote repairs and refurbishes gearboxes from most manufacturers and is equipped to meet all of your service needs. Brad Foote is one of the largest precision gear and custom-engineered gearbox manufacturers in North America.

IMPORTANT! When shipping items for evaluation/rebuild:

1. DRAIN OIL: Drain the unit of oil prior to shipping. Federal regulations require that gearboxes be shipped without oil.
2. TAG PARTS: Tag the gearbox and all loose components with the following information:
 - Your company name and address.
 - Contact person, phone number, fax number and email address.
 - Please reference your purchase order number.

3. SHIP TO FREIGHT PRE-PAID:

Brad Foote Gear Works
Gearbox Service Center
5100 Neville Road
Pittsburgh, PA 15225



Normal receiving hours are Monday through Friday from 6:30 a.m. to 2:30 p.m. Let us know if any special arrangements are required or if you need assistance with shipping the unit to our facility.

Upon arrival at our facility, the gearbox and any additional components will be photographed and inventoried. Details such as hand of assembly, external lubrication systems and couplings are carefully recorded. All components are carefully evaluated for reuse, repair or replacement. A complete summary of recommended repairs including photos of worn or questionable parts is prepared for your review and a quotation provided. Please note that the above inspection requires a purchase order. If the gearbox is repaired or a drop-in replacement ordered, Brad Foote will waive the inspection fee.

STANDARD INSPECTION FEE SCHEDULE

**PLEASE CONTACT YOUR BRAD FOOTE
GEARING SALES REPRESENTATIVE OR THE
FACTORY FOR COMPETITIVE RATES.**

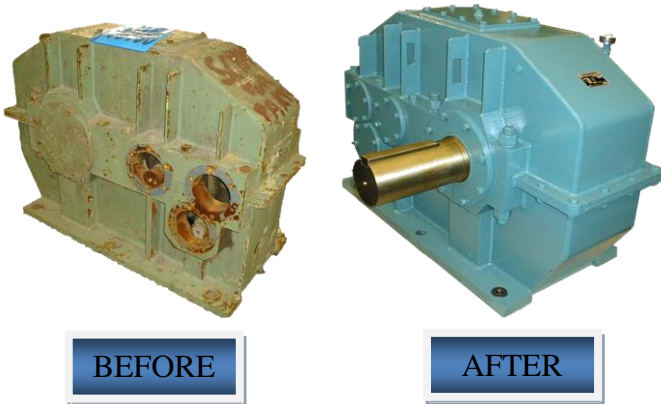
**Please contact your local Brad Foote representative
or Will Willman or Rich Baker at 412.264.1428
with any questions.**

Brad Foote Gearing services gearboxes from any manufacturer and we're used to working on obsolete and "oddball" gearboxes. Some of the gearboxes we have serviced include:

Amarillo Cooling Tower and Pump Drives	Dorris Gearboxes	Lohmann Planetary Drives
Alten Pump Drives and Reducers	Eagle Iron Works Gearboxes	Morse Gearboxes
Browning Speed Reducers	Falk Gearboxes (all types)	Nord Gearboxes
Chicago Gear \ D. O. James Speed Reducers	Fessler Gearboxes	Nuttall Gearboxes (all types)
Cleveland Worm Drives	Flender Gearboxes	Philadelphia Gearboxes (all types)
Criton Planetary Gearboxes	Foote-Jones Gearboxes (all types)	Pollack Bottle Car Gearboxes
David Brown Gearboxes	Hansen Gearboxes	Renold Gearboxes
Delroyd Worm Gearboxes	Harnischfeger Crane Gearboxes	Santasalo Gearboxes
Dodge\ Reliance Electric Speed Reducers	Hitachi Caster Gearboxes	Sumitomo Paramax Gearboxes
Cone Drives	H & S Gearboxes (all types)	Treadwell Bottle Car Gearboxes

Brad Foote delivers great value

Our engineering staff is ready to "reverse engineer" parts and resolve problems to improve your equipment. For example, one of our customers shipped us a housing with scrap herringbone gearing. We refurbished their existing housing and re-engineered their antiquated components into a modern design with AGMA Q12 thru-hardened helical gearing, ISO dimensioned bearings and an enhanced service factor to provide years of trouble-free service and at substantially less cost than a new unit.



Brad Foote builds spare units for process lines that use obsolete gearbox designs. When spares or replacements are required the original equipment manufacturer may not be your best choice. If the product being ordered is no longer the manufacturer's "current design," you may find the price and lead-time to be excessive. Brad Foote can custom build **DROP-IN REPLACEMENT GEARBOXES** that meet or exceed the capabilities of the original drives at prices less than the **OEMs**.

Modern material selections and heat treating, 25° pressure angle tooth forms and optimized ratio selection can almost double the capacity in some units. This is an excellent way to eliminate nagging maintenance problems and extend the service life of your process lines.



- AGMA Q12 Class Gearing
- Heavy duty cast iron or fabricated steel housings
- ISO dimensioned ball, taper roller or spherical roller bearings
- Bearing quality steel pinions, gears and shafts
- Plunge ground sealing surfaces
- Standard inch series hardware